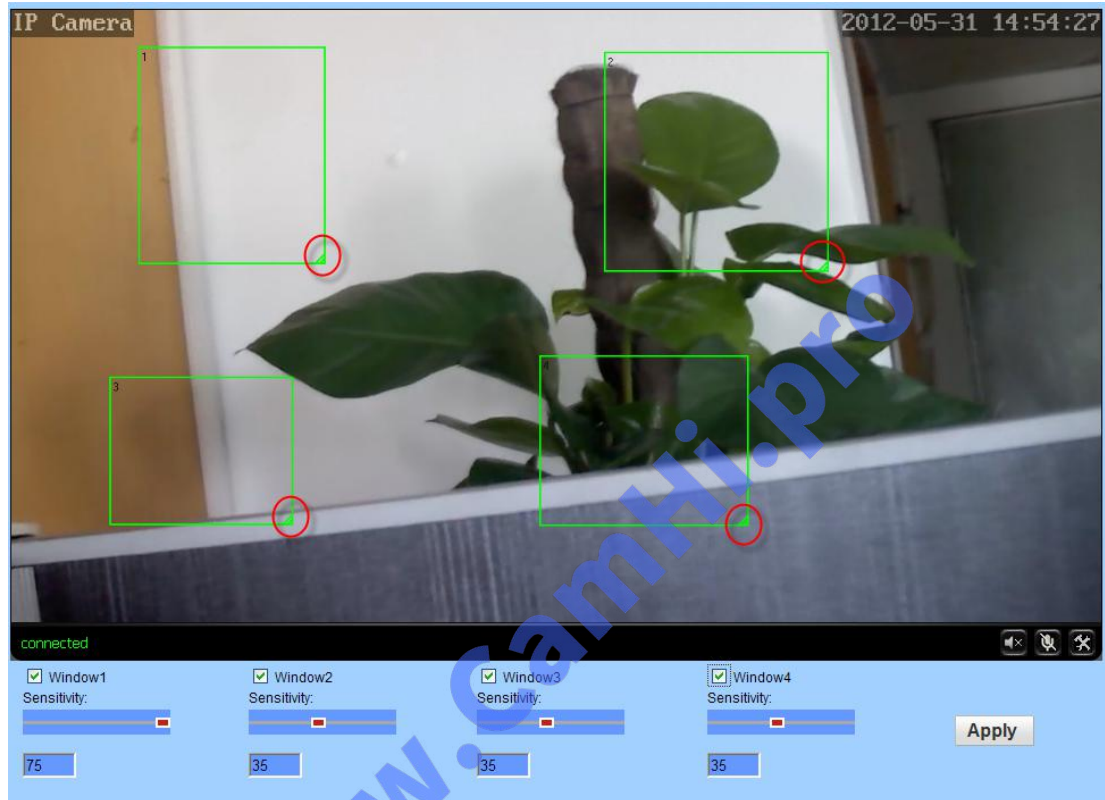


How to set alarm to upload pictures and video to the FTP server

server

1. Setting motion detection



If you want to monitor a zone fixed, when the zone has exception, it enables alarm, you can choose motion detection function. Settings like below. The equipment can support 4 zones setting, you can enable it through tick the option box at the bottom of page. When enable a zone, the zone box will display on the screen, and list zone number, moving mouse to this zone box, you can drag the box to any position; also can move mouse to red box at the bottom right corner, drag it to change the size. After setting, click apply, motion detection will take effect.

2. Setting alarm Linkage

When alarm triggered, the equipment will alarm with many ways, as shown in below picture:

- send alarm and pictures to email
- send captured pictures to assigned FTP server

- send video recording to assigned FTP server
- capture a picture, then save to TF Card
- Recording a video for 15 seconds, then save to TF card (including 1-3 seconds warning before video)
- linkage Preset: after the alarm, call preset
- alarm capture quantity, setting as required (1-3 pieces)

Linkage set

E-mail Alarm and Send with Picture [Email Setting](#)

Save Picture on the FTP Server [FTP Server Setting](#)

Save Video on the FTP Server

Save Picture on the SD Card

Save Video on the SD card

1 ▾

Image capture

Image capture number: 1 ▾

Apply Cancel

If you want set alarm to upload pictures and video to the FTP server, please tick "Save Picture on the FTP Server" and "Save Video on the FTP Server". and then click "Email setting"

3. Setting FTP Server

FTP

Server Address:

Server Port:

User name:

Password:

Passive mode: On Off

Path:

Test FTP settings: Please set first, and then test.

Note: If using FTP function, you need to apply the user name and password from FTP Server firstly, and apply a certain storage space at the same time, also asking the user have authority to write and build sub-directory to storage space.

4. Setting alarm time

schedule

	0	1	2	3	4	5	6	7	8	9	10	11	12	13	14	15	16	17	18	19	20	21	22	23
Sunday																								
Monday																								
Tuesday																								
Wednesday																								
Thursday																								
Friday																								
Saturday																								

The equipment will trigger alarm only after detected alarm in protection period. So you need to select which time to set protection carefully.

Note: When setting time, please adjust system time firstly.